

OBJECTIVE

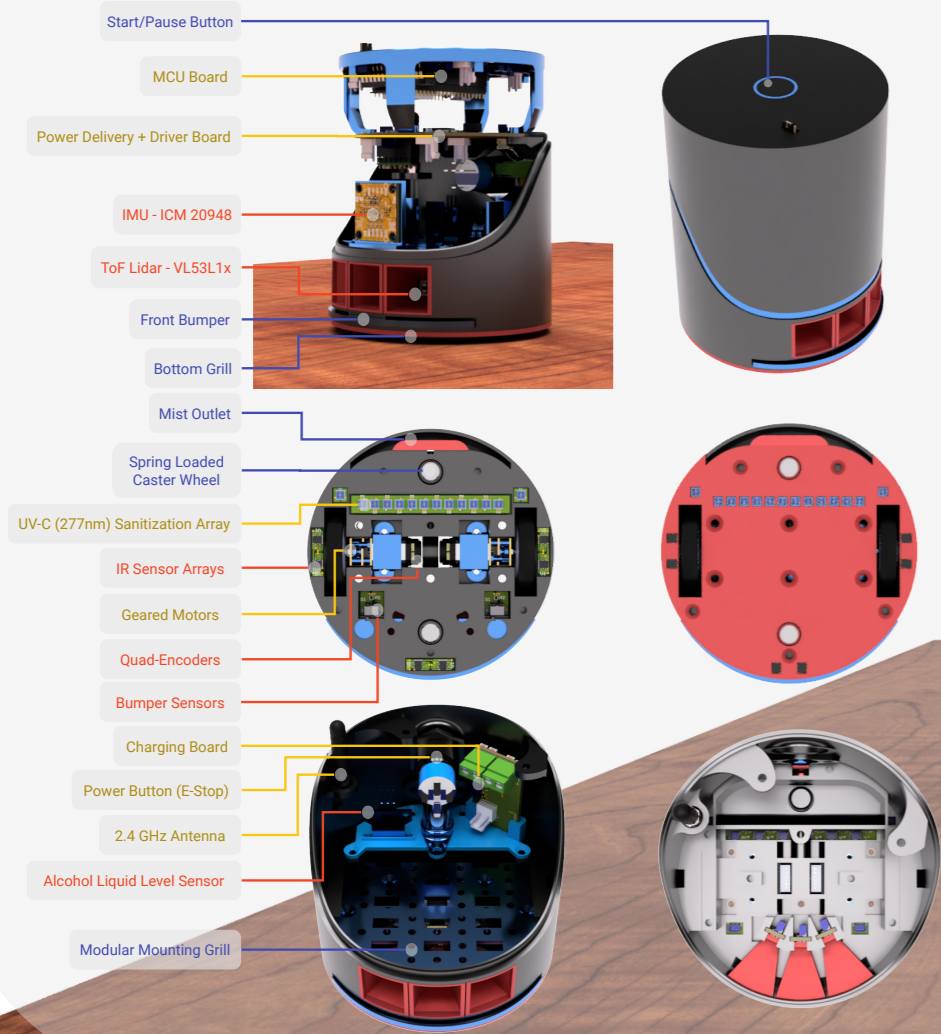
- Disinfect a 1.2m by 0.7m in a single charge
- Obstacle Avoidance + Negative Incline Detection
- Support >1 kg load
- Under \$300 to manufacture
- Safe to use with emergency features
- Palm size chassis

TableUV

"To significantly reduce disease transmission by designing an accessible and economical device for the general public."

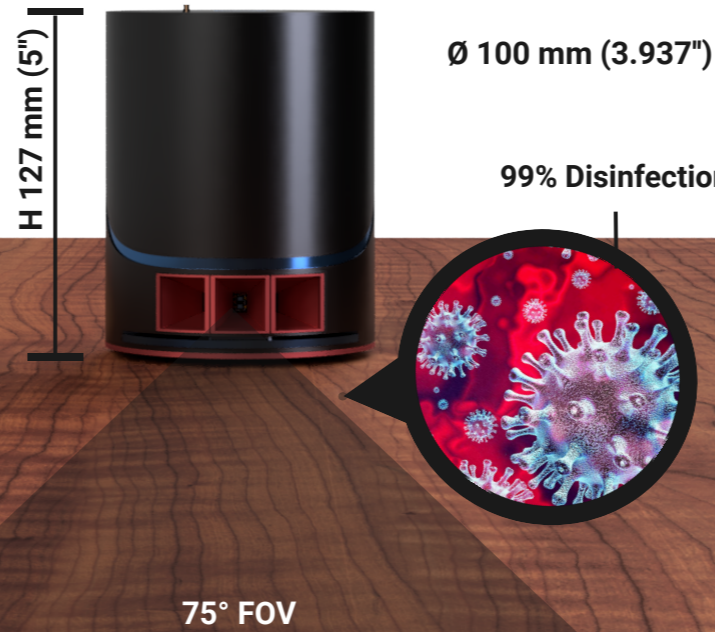


MECHANICAL



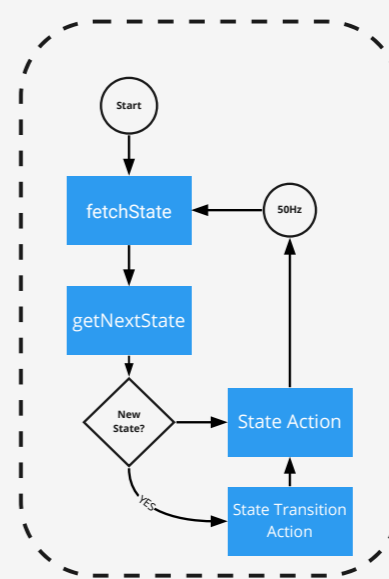
FEATURES

- Collision Avoidance
- Object Detection
- Table Edge Detection
- UV Disinfection Control
- Alcohol Dispensing Control
- Compact Design
- Circuit Protections
- UV LED Safety Shutdown
- Rechargeable Battery

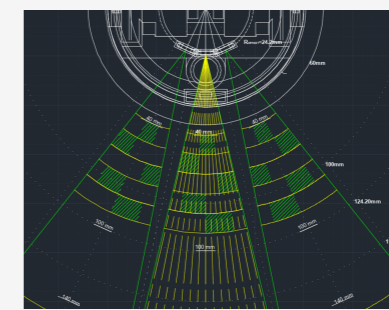
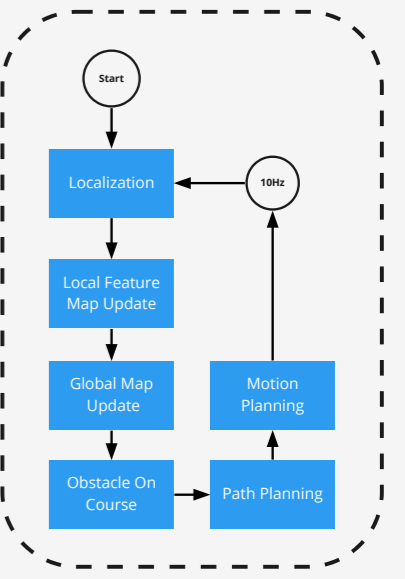


SOFTWARE

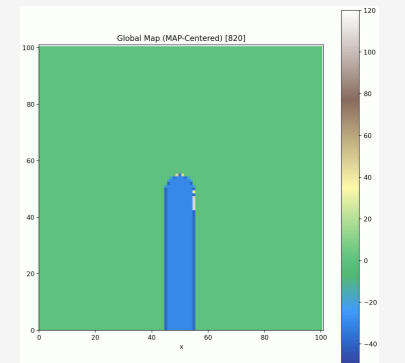
Supervisor



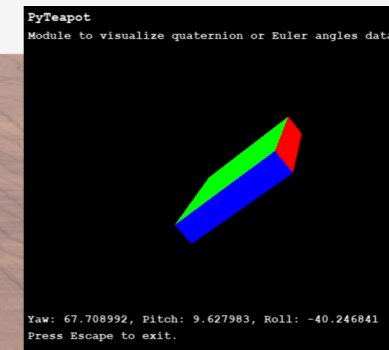
SLAM



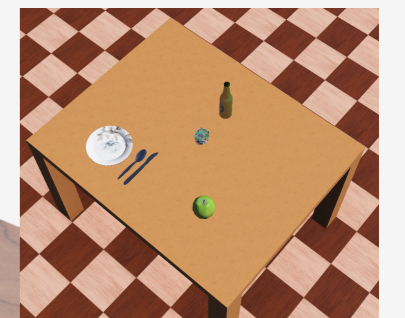
ToF Field of View



Global Map Generation



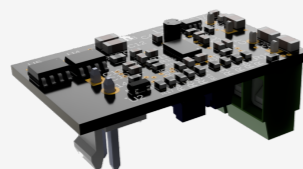
IMU Visualization



Simulation

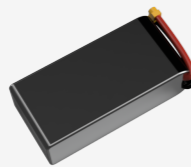
MCU BOARD

- ESP32 - Main MCU
- 3x ATTiny84 - Sensor & Motor Driver MCU
- UV LED Driver
- USB-C Charge Input
- LEDs & Button



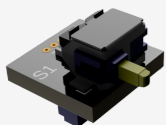
POWER & DRIVER BOARD

- Motor Driver DRV8835
- 3.3V Buck Regulator
- 6V Buck Regulator
- 10V Buck Regulator
- 24V Boost Regulator
- Alcohol Mist Haptic Driver



COLLISION BOARD

- 2x Switch Detectors
- 35gf Actuation Force



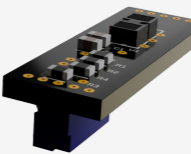
CHARGER BOARD

- LiPo Charger IC
- Battery Voltage Monitor
- Battery Temperature Monitor
- Battery Charging Profiler
- Battery Fault Detection



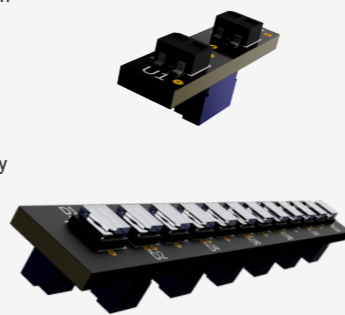
BATTERY

- 3 Cell LiPo
- 11.1V 1300mAh
- Fast Charge Capability



TOF SENSOR BOARD

- 3x ToF Sensors
- 4m Sensing Distance
- Configurable ROI



ELECTRICAL & FIRMWARE

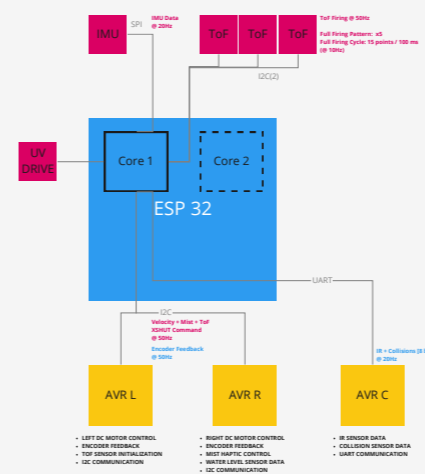
IR SENSOR BOARD

- 6x IR sensors (2 per board)

UV LED ARRAY BOARD

- 12 UV LEDs
- 277nm wavelength
- 7.2V Forward Voltage

LOW LEVEL FIRMWARE ARCHITECTURE



TEAM 55



Dong Jae Park



Jerome Villapando



Jack Xu



Tsugumi Murata



UNIVERSITY OF WATERLOO

FACULTY OF ENGINEERING
Department of Mechanical and Mechatronics Engineering

Open Source @ <https://github.com/TableUV>